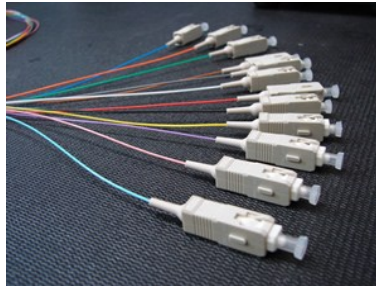




**MPO Fiber Optic Patch Cables**



Fibertronics supplies The singlemode or multimode MPO fiber cable. Multifiber connections used in high-density backplane and Printed Circuit Board (PCB) applications in data and telecommunications systems. The MPO fiber cable connector offers up to 12 times the density of standard connectors, providing significant space and cost savings.

MPO fiber patch connectors utilize precision molded MT ferrules, with metal guide pins and precise housing dimensions to ensure fiber alignment when mating. The MPO fiber cable can be mass terminated in combinations of 4, 8, or 12 fiber ribbon cables.

**Applications:**

- Patch cords and Fan-Out assemblies
- ATM & DWDM high speed communication systems
- Multimedia
- CATV and Video
- Data and Telecommunication Networks
- Industrial

	<b>Multi Mode MT Standard</b>	<b>Multi Mode MT Elite (Low Loss)</b>	<b>Single Mode MT Standard</b>	<b>Single Mode MT Elite (Low Loss)</b>
Insertion Loss	0.20dB Typical (All Fibers) .060dB Maximum (Single Fiber)	0.10dB Typical (All Fibers) .035dB Maximum (Single Fiber)	0.25dB Typical (All Fibers) .075dB Maximum (Single Fiber)	0.10dB Typical (All Fibers) .035dB Maximum (Single Fiber)
Return Loss	>20dB	>20dB	>60dB (8 Degree Angle)	>60dB (8 Degree Angle)

**MTP Connector specifications.**



Aqua MM 50um



Yellow SM 9um



Green SM 9um



Beige MM 62.5um

Standard