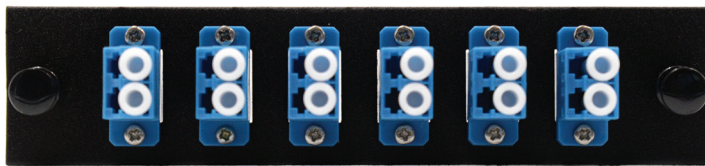
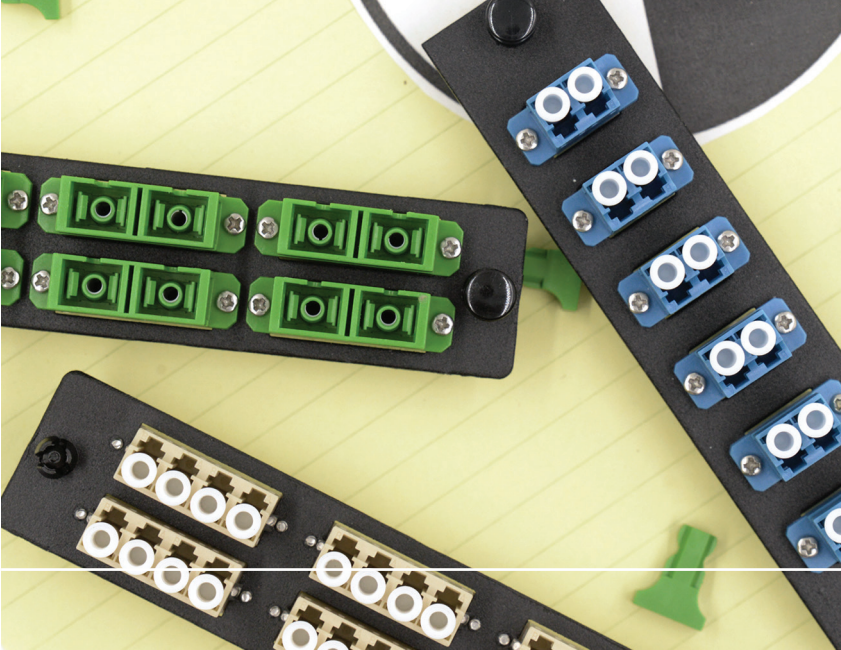


# LGX Adapter Plates

FIBERTRONICS 



**Our LGX fiber optic patch panel adapter plates, are designed specifically to fit most patch panels.**

LGX stands for Light Guide Cross-connect and our LGX adapter plates have standard dimensions of 13.03cm (5.130") x 2.92cm (1.150") with a center pin spacing of 11.80cm (4.646"). This standard size allows all LGX plates to easily fit all patch panels. LGX adapter plates are compatible with all standard fiber optic connector types.

## Features & Specifications

- LGX footprint with our standard 11.80cm (4.646") pin spacing
- Dimensions: 13.03cm (5.130") x 2.92cm (1.150")
- All metal construction
- Black powder coated (inflammable)
- The LGX adapter plate is interchangeable allowing for use in a wide range of products
- Installation is made easy with Push/Pull Pins
- Connectors are screwed in to prevent rattling
- RoHS compliant

Scan to visit our store

