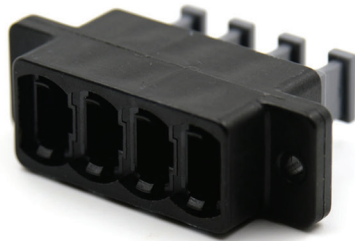


MTP® / MPO Adapters

FIBERTRONICS 



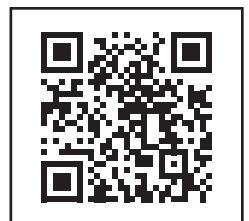
Fibertronics offers US Conec MTP® / MPO bulkhead adapters in a variety of single port and ganged configurations

Debris can affect the performance of fiber optic connectors in many ways. Designed to minimize debris generation and exceed requirements, our US Conec MTP® connectors are less susceptible to debris through repeated matings, making it less likely that debris will affect performance.

Features & Specifications

- One piece adapter design maximizes coupling strength while minimizing debris generation
- All adapters compatible with MTP Elite® brand connectors and standard grade MTP® brand connectors
- Available in black, beige, green, aqua, blue, red, magenta, yellow, heather violet, munsell violet, and gray
- Compatible with all US Conec MTP® brand connectors in fiber counts ranging from 4 to 72
- Available in Standard and SC Footprints for both full and reduced flange
- EMI versions available

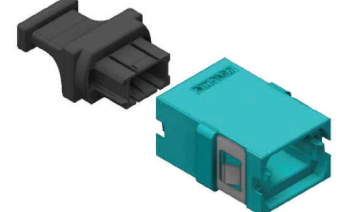
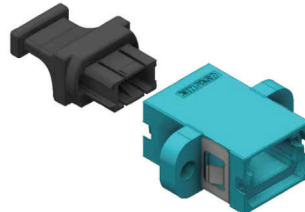
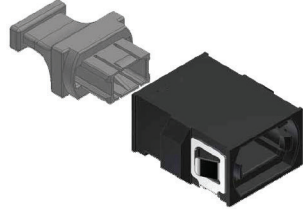
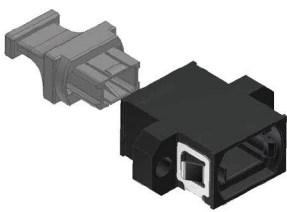
Scan to visit our store



MTP® / MPO Adapter Options

Standard Footprint

SC Footprint



Full Flange Adapter

Reduced Flange Adapter

Full Flange Adapter

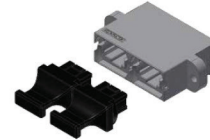
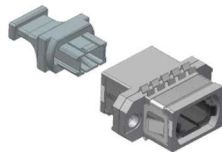
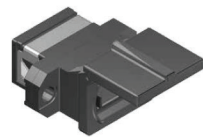
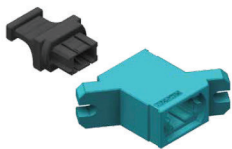
Reduced Flange Adapter

Available for use with FOCIS 5 and FOCIS 18 (MTP-16™)

Available for use with FOCIS 5 and FOCIS 18 (MTP-16™)

Specialty: Shuttered, EMI, SC Duplex, and Ganged

Specialty MTP® Adapters ranging from Shuttered to Ganged Adapters. Including Angled Adapters, Straight Adapters and Ganged Adapters up to 2*8. Available with multiple colors and dust cap options.



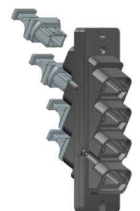
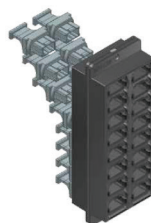
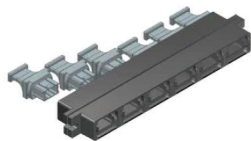
Full Flange Angled

Shuttered Adapter

EMI Adapter

SC Duplex Footprint
Full Flange

SC Duplex Footprint
Reduced Flange



Ganged 1x4
Straight

Ganged 1x6
Straight

Ganged 2x8
Straight

Ganged 1x2
Angled

Ganged 1x4
Angled