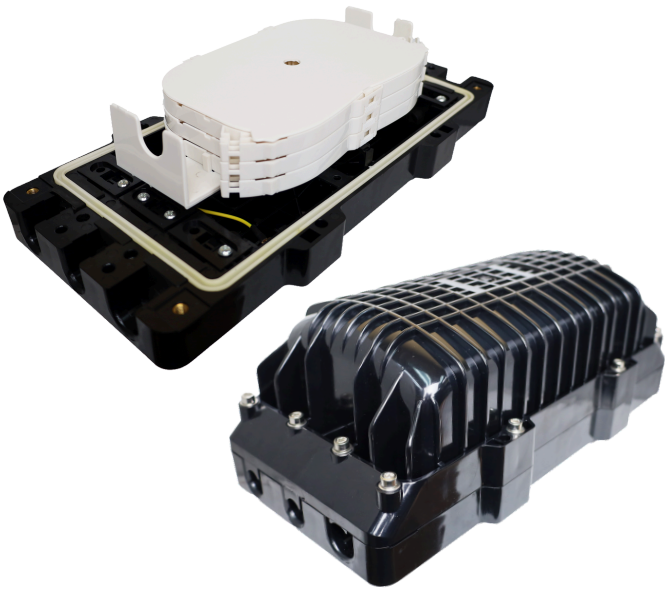


72 Fiber Optic Outdoor Horizontal Splice Closure

3 Splice Trays Included - 6 Ports at 16mm (x2) and 8mm (x4)

Overview

Fibertronics Inc. offers horizontal splice closures designed to protect and manage spliced fiber optic cables in a variety of network environments. These closures provide a sealed, durable housing that shields fiber splices from moisture, dust, and extreme temperatures. Suitable for aerial, underground, and direct-burial applications, they are built to ensure long-term reliability in harsh conditions. Fibertronics' designs also support easy installation and high fiber capacity, making them ideal for both small and large-scale fiber networks.



Key Features

- All performance indicators meet GR-771-CORE standards
- Suitable for aerial, wall-mount, or direct burial applications
- IP68 Rated – Dustproof and water-resistant
- Corrosion and UV resistant

Typical Applications

- Underground, aerial, and direct-buried fiber optic splicing
- Outside Plant (OSP) fiber network deployments
- FTTx (FTTH, FTTB, FTTC) rollout and maintenance
- Telecommunications and ISP backbone networks

Technical Specifications

| | |
|------------------------------|------------------------------|
| Ports | 6 Ports |
| Splice Capacity | 72 Fibers |
| Splice Trays Included | 3 Trays |
| Cable Diameter | 2x Φ16mm max. / 4x Φ8mm max. |
| Closure Size | 370mm x 185mm x 145mm |
| IP Rating | IP68 |
| Sealing Type | Mechanical |
| Internal Components Material | ABS |
| Metal Accessories Material | Stainless Steel |