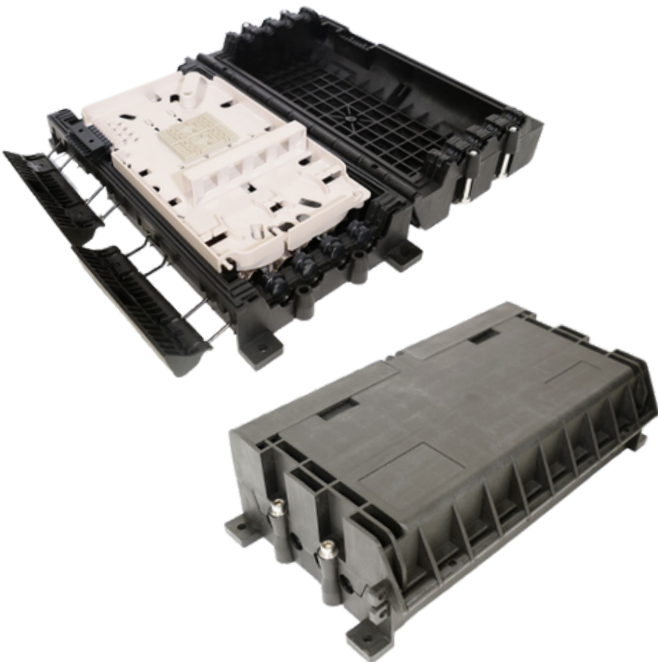


48-Fiber Outdoor Horizontal Splice Closure

1 Splice Tray Included - 8 Ports at 14mm - 8 Ports for 3mm or 3x2 Drop Cable - 48 Fiber Max Capacity

Overview

Fibertronics Inc. offers horizontal splice closures designed to protect and manage spliced fiber optic cables in a variety of network environments. These closures provide a sealed, durable housing that shields fiber splices from moisture, dust, and extreme temperatures. Suitable for aerial, underground, and direct-burial applications, they are built to ensure long-term reliability in harsh conditions. Fibertronics' designs also support easy installation and high fiber capacity, making them ideal for both small and large-scale fiber networks.



Key Features

- All performance indicators meet GR-771-CORE standards
- Suitable for aerial, wall-mount, or direct burial applications
- IP68 Rated – Dustproof and water-resistant
- Corrosion and UV resistant

Typical Applications

- Underground, aerial, and direct-buried fiber optic splicing
- Outside Plant (OSP) fiber network deployments
- FTTx (FTTH, FTTB, FTTC) rollout and maintenance
- Telecommunications and ISP backbone networks

Technical Specifications

Ports	8 Ports
Splice Capacity	48 Fibers
Splice Tray Capacity	1 Tray
Cable Diameter	8x Φ 14mm max. / 8x Φ 3mm or 3x2 drop cable
Closure Size	325mm x 173mm x 86mm
IP Rating	IP68
Sealing Type	Mechanical
Housing Material	Polypropylene with glass fiber reinforcement
Internal Components Material	ABS
Metal Accessories Material	Stainless Steel